



Blaise 5

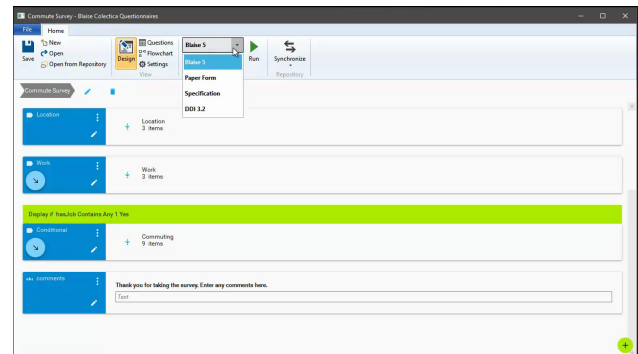
Survey Design Software



Blaise Colectica Questionnaires

Blaise 5 is the go-to tool for surveys of high complexity, but not all surveys are complex. That is why Blaise® and Colectica® created Blaise Colectica Questionnaires (BCQ). BCQ is an intuitive visual designer and survey specification tool that facilitates survey publication in multiple formats. BCQ enables survey designers to create questionnaires without using Blaise programming language and simplifies standardizing metadata in DDI format. Connecting BCQ with Colectica Repository allows survey creators to write new questions, organize surveys into sections, add logic and validation, and re-use items from question banks. Apart from Blaise 5 data capture instruments, Colectica Questionnaires enables outputs such as PDF specification, paper form and DDI 3.2 XML. The DDI Mapping document defines the mapping in both directions, offering complete and standardized documentation.

Figure 1: BCQ's Export Options



BCQ Features

Blaise Colectica Questionnaires

Blaise Colectica Questionnaires helps users visually design surveys with no programming experience. Survey creators can make changes and test them within minutes, which speeds up design iterations. The ability for survey authors and reviewers to comment on items and sequences ensures direct feedback options during the survey development process. Using a visual survey designer removes the need to exchange Word or Excel documents with inconsistent formatting and information which promotes rapid design iterations.

Blaise Colectica Questionnaires offers the following design capabilities:

- ✓ Visual design of surveys
- ✓ Display logic
- ✓ Add custom metadata
- ✓ Advanced response validation
- ✓ Multiple language support
- ✓ Choice grids and Question grids
- ✓ Rosters
- ✓ Display style for multiple-choice questions
- ✓ Dynamic text for questions using tokens
- ✓ Comment on items and sequences

Colectica Repository

Question banks are available with Colectica Repository, a standards-based metadata repository. This centralized storage system for data resource management facilitates collaborative workflows and provides automatic version control. Questions, along with sequences, can be reused from question banks and central repositories. With the aid of Colectica Repository, NSIs (National Statistical Institutes) can build and maintain an archive of questions from the entirety of their surveys and easily re-use them.

Standards Support

Colectica is one of the leading software tools to apply a standard method of tagging statistical data and metadata elements using XML. The design interface extracts metadata titles and tags from the DDI dictionary, enabling users less familiar with DDI to profit from the standards method. Users can export their data documentation to an XML file in the DDI metadata format and open and edit it, either in BCQ or other DDI applications. This capability aids users in fulfilling requirements to implement standardized DDI metadata.

Documentation & Reports

BCQ facilitates better documenting and reporting on survey processes. Multiple outputs are possible from the DDI survey specification, such as generating PDF documentation, populating web discovery systems and building customizable reports. Through this standardized documentation, users can receive more information about the data capture process, which adds credibility to the resulting data.

Figure 2: Creating display logic in BCQ

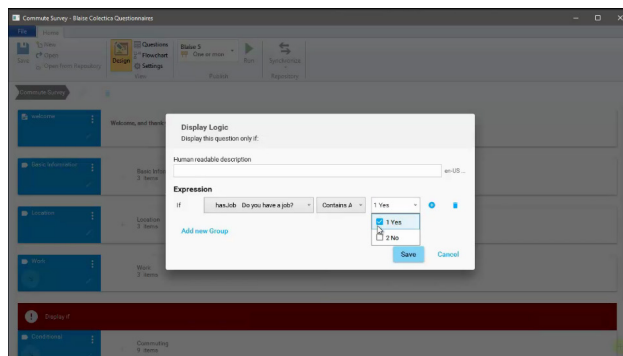
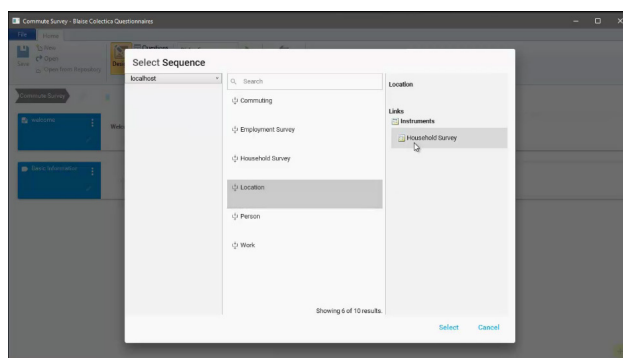


Figure 3: Selecting sequences from the Repository



How BCQ Benefits Organizations

Blaise programmers build questionnaires following instructions from their NSI's survey developers. With BCQ, survey experts can program questionnaires themselves. This reduces time and errors between concept and development of a survey. BCQ also reduces costs for Blaise training because NSI's can distribute the workload among their survey experts.

Figure 4: Questions view (linear list of all questions with sections and conditions)

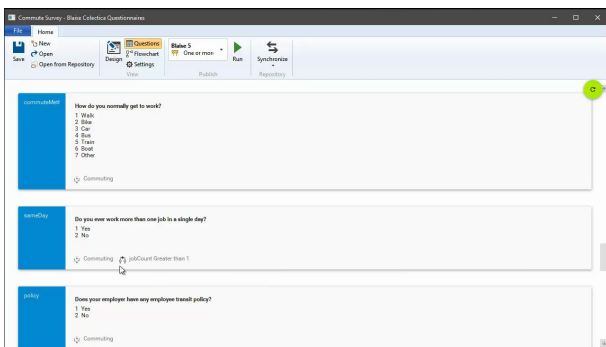
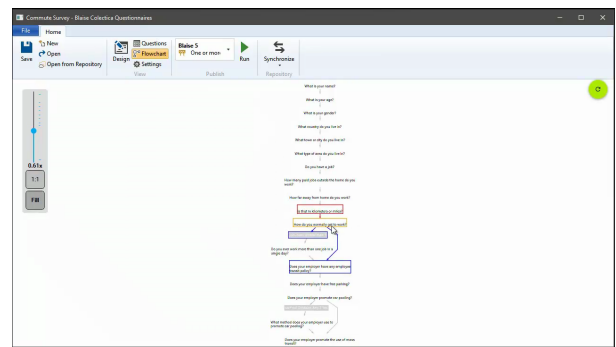


Figure 5: Flow chart view (high-level view of questions and routing)



BCQ not only reduces the time between development and deployment but also gives Blaise programmers within NSIs more time to concentrate on more challenging surveys. With the Blaise export feature, survey developers can easily pass their questionnaire on to the Blaise developers if a survey requires more complexity.

Figure 6: Questionnaire in Blaise Data Entry Program

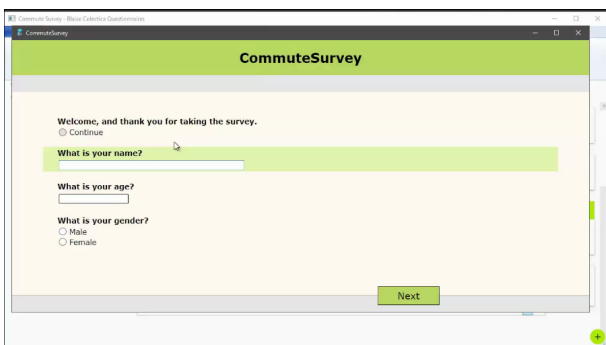
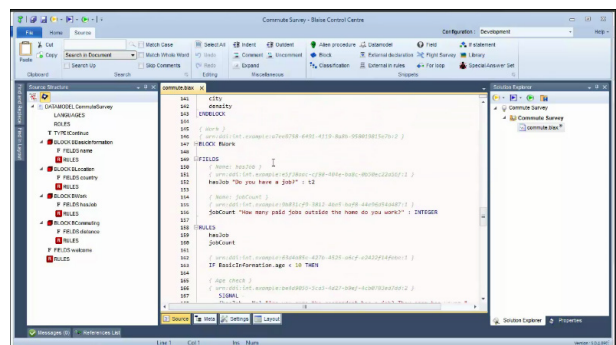


Figure 7: Blaise source code generated by BCQ



Latest Features

Colectica's recent release of BCQ further integrates Colectica with Blaise. The latest version adds a Drag and Drop capability to simplify reordering questions and fields and also enables describing calculations and skip logic with Blaise code. These features are now available:

- Selectable code generation styles
- Calculations and a visual calculation editor
- External data lookups
- Describe calculations and skip logic using Blaise code
- Drag and Drop reordering

Colectica's YouTube channel offers a full demonstration of all BCQ features at <https://www.youtube.com/watch?v=34XPMXWDYEI>.

About Colectica®

Colectica® is the fastest way to design, document, and publish statistical research using open data standards. Launched in 2010, the Colectica platform is an ideal solution for statistical agencies, survey research groups, public opinion research, data archivists, and other data-centric collection operations looking to increase the expressiveness and longevity of the data collected through standards-based metadata documentation.

Visit www.colectica.com for more information on all products and services.

About CBS' Blaise®

Blaise® is a software platform for computer-assisted data collection and survey processing that handles governmental and scientific surveys. Statistics Netherlands (CBS) is an NSI and Blaise's producer. Since 1986, experts at CBS have developed Blaise for the institution's survey programme. Today, NSIs worldwide use Blaise for both business and social surveys of varying complexity.

Visit www.blaise.com for more information on Blaise products and licenses.